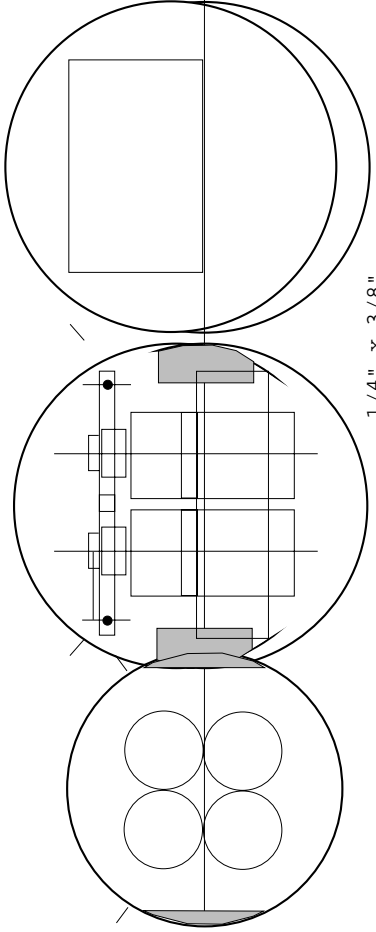


1/4" x 1/2"
basswood
side rails



1/4" x 3/8"
basswood
servo rails

switch

3/16" PC board
potted into spar

AAA NiMH
650 mAh
2.0 oz

Quantum-6
0.5 oz

JR 241
0.3 oz

6-32 Allen-he

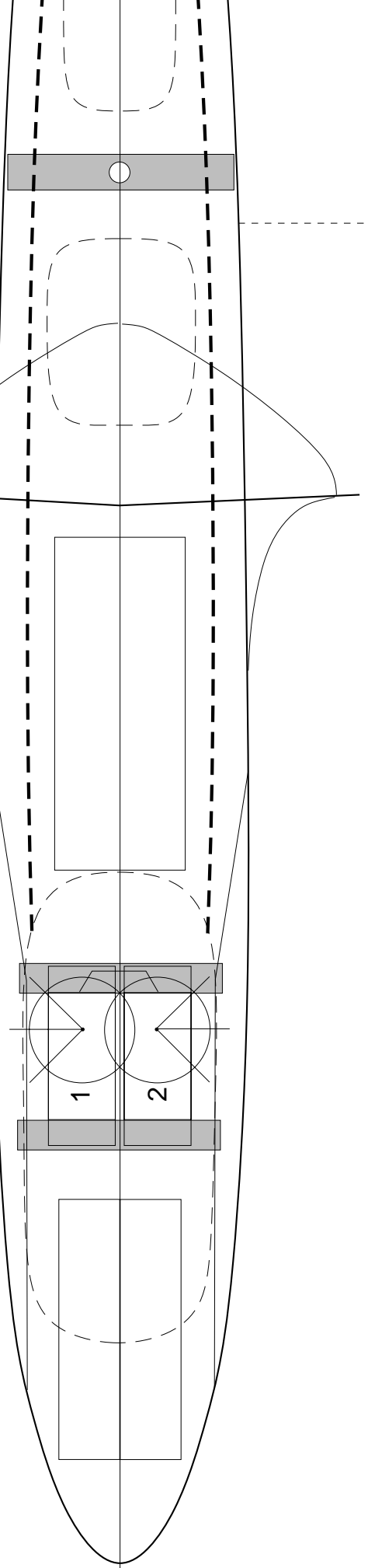
flap pushrc

4 layers 1.7 oz Kevlar

ply bulkhead
maple hook rail

Aegea II 2M Fuselage

9.0mm horn radii



13.5" x 0.375" x 0.014" Uni CF

9.0" x 0.375" x 0.014" Uni CF

3/16" PC board
potted into spar

14mm horns

6-32 pan-head bolt

6-32 Allen-head bolt

flap pushrod: 1/8" hollow CF rod

ply bulkhead
maple hook rail

bent 6-32
Allen bolt

wing angle
3.0 degrees

antenna inside boom

boom angle
1.0 degree

0.025" steel rudder pushrod

Teflon tube housings
on top of boom

0.040" CF elevator pushrod

