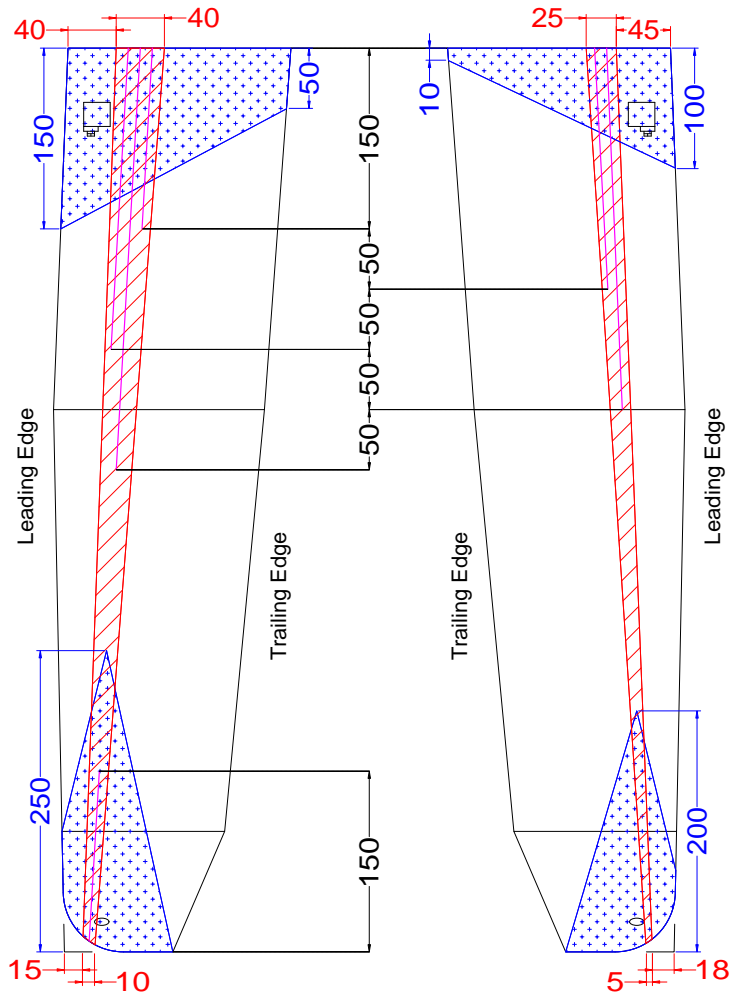


# Top Skin

# Bottom Skin



All dimensions in mm  
(25.4 mm = 1 in)

## 'Kahu'

RC Discus Launch Glider

Span: 1.5 m (59 in)

Area: 24 sq dm (372 sq in)

Mass: 270 g (9.5 oz)

Chris Kaiser

July 2001

### Wing Layup Schedule

#### Leading Edge:

25mm wide strip of 60gm (1.7oz) kevlar cloth cut on a 45 degree bias. Use 3M77 spray adhesive to wrap around LE of cores. Wet out with resin before bagging.

#### Main Skins: (Top and Bottom)

1 layer of 35gm (1oz) kevlar cloth cut on a 45 degree bias.

#### Reinforcing:

☐ Extra layer of 35gm (1oz) kevlar cloth.

▨ 100gm (3oz) uni-directional carbon spar caps.

▧ 3mm (1/8") wide pre-cured 150gm (4.5oz) uni-directional carbon strips pressed (on edge) into knife slits in foam cores (under spar caps).